



Add:NO. 87 YingBin West R.D.,Huangtu Town,
 JiangYin,JiangSu Province,China,214445
 Tel:+86-510-86651059
 Fax:+86-510-86651040
 WebSite:www.jingmichina.com
 E-mail:jingmico@sina.com

IT'S OUR PLEASURE

TO COPPERATE WITH YOU

BAM series over-current protector

Structure characters

BRM series are snap-action protector for over-current protection. Products have many benefits such as easily installing, insulation case, large contact capacity, and so on

Applications

BAM Series are widely used for current control and protection in auto machine, electric tools and all kinks of low voltage electric appliances



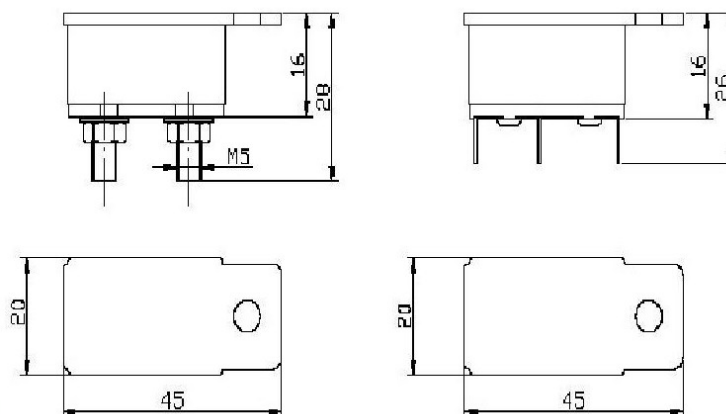
Parameters

Rated voltage: DC24V
 Rated current: 5A~50A
 Trip current: 10A-100A, Trip time:10S±5S
 Contact capacity: DC24V, 100A

Table for current VS time

Trip current	Trip time (under ambient air temp 25°C)	Trip current	Trip time (under ambient air temp 25°C)
10A	10±5S	60A	10±5S
20A	10±5S	70A	10±5S
30A	10±5S	80A	10±5S
40A	10±5S	90A	10±5S
50A	10±5S	100A	10±5S

Figure



Certification

complying with RoHS